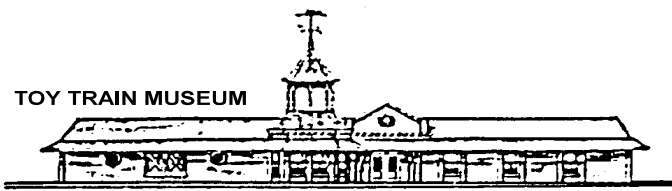


THE LAYOUT



ENJOY A VISIT TO YOUR MUSEUM

THE SOUTHERN DIVISION TRAIN COLLECTORS ASSOCIATION

SUMMER 2016

VOLUME 50

NUMBER 3



**SAVE THE DATE FOR THE
50th ANNIVERSARY PARTY ~
NOVEMBER 5th!**

**SAVE
THE
DATE**

**FOR
THE**

**50th
ANN.
PARTY**

**NOV.
5th!**



ARE YOU READY TO MAKE SOME . . . "GOLDEN" MEMORIES?!

The above photos were taken at the Pembertons' a few years back.

(Bob Mintz/Charlie Anyan/Arnie Travitsky/Jim Herron are showing the scale of the railroad.)

We're generating excitement for the 2016 party, same place, to celebrate the
Southern Division's 50th Anniversary!

In This Issue

- * SD Board of Directors, et al
- * SD President's Message; SD on Facebook; e*Train up and running
- * Venice Show Info (Meet Story, Directions, and Friday event)
- * SD 50th Anniversary Celebration, Souvenir Car update, and Travel Mug info
- * SD Souvenir Train History - Part 7
- * SD Increases Membership
- * SD Member Recognized for 50 Years in TCA
- * Peter Campisi's Amazed and Grateful Railroad
- * Photos
- * The Traveling of Toy Trains Tooling and Dies
- * Switch List
- * Upcoming 2016 Florida Meets & Train Shows

Inserts (7)

1. Venice Show Flyer, Table Registration Form, and Dinner and Show & Tell Pre-registration Form
2. SD 50th Anniversary Celebration Pre-registration Form
3. Directions to Anniversary Celebration parties
4. Jacksonville Show Flyer and Table Registration Form

**The Southern Division Board of Directors, Southern Division
Webmaster, *The Layout* Distribution Manager, and *The Layout* Editor**



President

Brad Woodward

Phone: 772-577-3881

collectorsshowcase@hotmail.com



Past President

Charlie Anyan

Home Phone: 727-345-0288

Cell Phone: 727-459-8681

canyan1@tampabay.rr.com



Vice President

Steve Johnson

Phone: 305-335-1752

Sjohnson@fldcpa.com



Past President

Arnie Travitsky

Phone: 407-260-8599

ARNI99@aol.com



Secretary

Dienzel Dennis

Phone: 386-258-8574

dieden39@aol.com



Southern Division Webmaster

Jake Jacob

Phone: 828-245-3657

BL_Jacob@hotmail.com



Treasurer

Mike Powell

Cell Phone: 585-781-4996

MBPowell@aol.com



***The Layout* Distribution Manager**

Jim Spangler

Phone: 727-398-5343

Jdspangler@sprynet.com

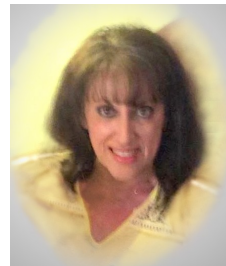


Communications Officer

Linda Harris

Phone: 727-796-5721

Linda_A_Harris@msn.com



***The Layout* Editor**

Mary Anyan

Phone: 727-345-0288

mia1@tampabay.rr.com

Address Changes

Please inform **Dienzel Dennis**, the Southern Division Secretary (see contact info on this page), of all address changes. Please do not send address changes to the editor of *The Layout* as that will only delay processing.

Check out the Southern Division Website:
www.tcasoutherndivision.org

PRESIDENT'S MESSAGE

by

Brad "Keep Trackin' Those Trains" Woodward

TCA National Convention: I represented the Southern Division at the convention in Houston. It was very informative and entertaining, and it was great to catch up with folks I hadn't seen since last year's convention.

Southern Division's Upcoming Meets: Venice, September 10 and Jacksonville, November 19 (Flyers and Table Registration Forms are in this issue.)

Southern Division's 50th Anniversary Celebration: On November 5, we'll be celebrating in the Orlando area with a great deal of fellowship, fun, food, and surprises. We hope to see you there! Thank you to the Anniversary Committee: Bill Trappen, Richard Tashjian, and Mike Mills. (See Pre-registration form in this issue.)

50th Anniversary Souvenir Trolley: Only 50 trolleys are available, and most have been sold - have you ordered yours?

Southern Division Increases Membership: While membership in many train clubs and divisions in the TCA is decreasing, the SD **increased** our new-member sign ups by **60%** from FY 2014-2015 to FY 2015-2016! I'm proud of our members - you deserve the credit for helping us reach this goal, and I thank you. (See letter from the National HQ and photo of S Gauge car for raffle in this issue.)

One Southern Division Member Recognized for 50 Years in TCA: See name, copy of certificate and pin in this issue.

Train Tooling: It's amazing how this process has progressed! In the '50s, AMT became Kusan to KMT to Williams to K-Line to MTH to RMT, with Marx molds scattered in between with K-Line. So the past continues into the future. (See story about these trains in this issue.)

See you at the VENICE SD-TCA Train Show - September 10.

SD on FACEBOOK

Did you know . . . that the Southern Division has a Facebook page? It was created and is maintained by Linda Johnson, wife of Vice President Steve Johnson. Search for **Train Collector's Association-Southern Division** (the banner looks like this):



We ask you to "Like" the page and send photos and articles to post. We also post information about upcoming TCA-SD meets and are hoping to reach people not reached with our other advertising. The more "Likes" & "Shares" we get the broader our exposure to others that may not be as familiar with this wonderful hobby! Photos which include children seem to get the most "Likes," but please make sure you have prior, parent/guardian permission. Email your submissions directly to Steve: Sjohnson@fljdcpa.com, and he'll get them to Linda to post. Thanks for your help!

Take the e*Train!

From Carol R. McGinnis, e*Train Editor: "e-Train, the online magazine of the Train Collectors Association is up and running. Help us continue e*Train's success.

If you have an idea for an article, we'd like to hear from you. We're already thinking about the next edition, and you can be part of it!"

Go to www.tcaetrain.org. The banner looks like this:



Venice Meet Story, Saturday, September 10, 2016

This is our fifth meet in Venice, and each year it continues to grow. There's room for well over 125 dealer tables (and we're approaching 200!), many display tables, and many operating layouts as well. We will utilize the two side rooms. We have had great success in previous years and expect more of the same this year. **(See Flyer and Table Registration Form inserts for additional information.)**

Location: Venice Community Center, 326 S. Nokomis Ave., Venice, FL 34285

Meet Host: Tim Evert, SD# 2154, 7060 Laretta Street, Englewood, FL 34224, 941-475-5278, tjeng@comcast.net

Set up: Friday from 3-5 PM **(No dealers will be allowed to set up any earlier than 3:00 PM)** and Saturday from 7-9 AM. A Board of Directors meeting is scheduled on Friday from 4-6 PM. Please note: The Venice Community Center will not allow us to enter any earlier than 7 AM.

Meet Times: 9 AM for TCA members only (there will be a short, business meeting sometime between 9 and 10 AM), and 10 AM-3 PM for the public.

Admission is \$5.00. Children 12 and under are free when accompanied by an adult. In an attempt to invite more children into the hobby, we are offering this incentive to adults: one free admission for an adult who brings along one child 12 or under.

Features: We will have an "on the floor" G scale layout from the Florida Railroad Museum, a beautiful 8' x 16' O scale layout from the Real Rail club of Sarasota, and our own Train Drag Races for O and S gauge, with a scale length 1/4 mile track (Ok folks, let's see who really is the fastest - at your own risk!). Denton Hines also will be hosting a train repair clinic.

Lodging: There are several nearby hotels. The Board of Directors overwhelmingly prefers the Hampton Inn, 881 Venetia Bay Blvd., Venice 34292, (941) 488-5900. They quoted a rate of \$99/night on 6/8/16, but it is suggested that you shop around with on-line services such as Expedia or Trivago - you likely will get a better rate. Other possibilities: Hotel Venezia (formerly Ramada Inn), 425 US 41 Bypass N, Venice 34285, (941) 308-7700, or Inn at the Beach, 725 W. Venice Ave., Venice 34285, (941) 484-8471.

Food: Lunch will be provided during the meet at a reasonable cost. There are many nearby restaurants.

Volunteers are needed to help out in many ways, particularly in working the admission tables. If you can help, please contact Tim Evert. Thank you very much in advance!

Friday, November 9, Dinner and Show & Tell will be held in the Venice Community Center (same venue as the meet). The Southern Division BOD will cover all costs except \$5.00 per person for SD-TCA Members, Spouses and Children. **NOTE:** Attendees are not required to pay for dinner unless they want to eat or drink, and there is no charge to attend the Show & Tell. Non-SD-TCA attendees are required to pay the full \$15.00/person as a Guest of an SD-TCA member if they would like to eat or drink. Dinner begins at 6 PM, and the Show & Tell begins immediately after the dinner. This should run between 6-8 PM. **(See Pre-registration Form insert.)**

Directions To The Venice Meet

From **North** of Venice: Take Interstate 75 southbound to Exit number 200 (Highway 681). Proceed 3.5 miles until Highway 681 ends at US 41. Go south on US 41 for 2.7 miles until the point where US 41 splits into Business 41 and Bypass 41. Follow Business 41 (also called Tamiami Trail) right, then proceed for .8 mile and then turn right at Milan Ave. Go one block, turn left onto Nokomis Ave, and you are there.

From **South** of Venice: Take Interstate 75 northbound to Exit number 193 (Jacaranda Blvd.). At the end of the exit ramp turn left onto Jacaranda Blvd. Follow Jacaranda Blvd. south for .8 mile to Venice Avenue. Turn right onto Venice Avenue (there is a roundabout; no stop light at this intersection). Proceed West on Venice Avenue for 3.1 miles, cross US 41 Bypass and continue West over the Bridge to Business US 41 (stoplight at the base of the bridge). Turn left onto Business US 41 (also called Tamiami Trail) and go .3 miles and then turn right at Milan Ave. Go one block, turn left onto Nokomis Ave. and you are there.

From the **Venice Community Center to the Hampton Inn:** Go North on Nokomis Ave. less than one block to Milan Ave. Turn right and go one block to Business US 41 (also called Tamiami Trail). Turn Left onto Business US 41 and go 1 mile to where both US 41s join again. Bear left, then go .1 mile to Venetia Bay Blvd. Turn right, go .1 mile and you are there.

ALL ABOARD THE SOUTHERN DIVISION TCA GOLDENANNIVERSARY EXPRESS!



Come Celebrate the 50th Anniversary of the Southern Division ALL WEEKEND in the Orlando area.

Join us . . . on Friday, November 4th, 5:00 PM to 9:00 PM for an
OPEN HOUSE at Clark & Ilene Vegazo's, 2225 West Dale Circle, Deland, FL 32720
featuring Clark's & Ilene's Toy Trains & Other Collectibles PLUS
Many Classic Autos owned by Clark & Other Members of His Classic Car Club.
But WAIT ~ there's MORE! Clark advised that there will be a LIVE BAND!

and Join us Again . . . on Saturday, November 5th, 11:00 AM to 4:00 PM
for a **Mini-Train Meet, Family BBQ Luncheon & Train Rides**
plus FREE SD Golden Anniversary Souvenir Travel Mug
at Bruce Pemberton's Outdoor Paradise Park R.R.
682 Gladwin Ave., Fern Park, FL 32730.

Full details follow plus a **Pre-registration Form** for the Saturday Party, and directions to both parties are included with this newsletter as separate inserts. We also will be selling advance, discounted price tickets for the November party at the Venice Meet in September. Look for the special SD Golden Anniversary Table at the Venice Meet.



THE TCA SOUTHERN DIVISION'S GOLDEN ANNIVERSARY!

During 2016 we are celebrating our 50th Anniversary with special souvenir items and parties. The souvenir trolley cars that were announced earlier are now in production. We were able to fill all orders. The completed cars will be distributed at the Venice Meet on September 10th for those members that will be picking them up, and they will be mailed early in the following week to members who ordered cars to be shipped to their home.

The Golden Anniversary GOLD trolley will be auctioned off at a later date during the year. Stay tuned for more details on that Very Special One-Of-A-Kind Souvenir Car.

Now for the parties! On Friday evening, November 4th from 5 pm to 9 pm, member Clark Vegazo and his wife Ilene will host their annual open house at their home in nearby Deland. Many members will remember attending their open houses in conjunction with Orlando train meets over the years. Clark's fantastic post-war Lionel collection will be on display along with a parking lot full of Classic Autos (1:1 scale) owned by Clark and his Classic Car Club friends.

(cont'd. on next page)

THE TCA SOUTHERN DIVISION'S GOLDEN ANNIVERSARY! (cont'd. from previous page)

Last year there were 50 Classic cars at his open house. This year Clark & Ilene will have a live band to serenade attendees plus Clark finally has a layout! And, as can be expected from Clark, it's not just a train layout, it's the post-war Lionel Dealer Display Layout #D-224 as shown set up in his train room in this photo.



While this open house certainly will be an outstanding occasion, the main celebration will take place on Saturday, November 5th with a multi-event party at Bruce Pemberton's property in Fern Park. Many members will remember the good times we have had there in the past. In addition to riding trains on Bruce's "Paradise Park" 7½" gauge live steam railroad, members and their guests will be dining on a barbeque cookout luncheon. In addition, we will have an old-fashioned "MINI-TRAIN MEET" reminiscent of when the Southern Division was founded 50 years ago with train meets held at members' homes! In this case members will

park their cars in Bruce's large grassy parking area, open their trunks (or, to bring this up to date, open the tailgates of their SUVs or mini-vans) and have a good old-fashioned swap meet! There will be no additional charge to participate in this mini-meet which will last about 2 hours and take place concurrently with the train rides on Bruce's outdoor railroad. Now this is not a full-fledged "official" SD Train Meet with a portion open to the public, as this entire event will NOT be open to the public. Because the Division is subsidizing a portion of the costs, this party only is for SD members and their immediate families (children, grandchildren, etc.), OR a member attending without family may bring ONE guest. The day's activities will start at 11:00 AM and end at approximately 4:00 PM.

The Barbeque Luncheon will be served at 1:00 PM and be catered by "THE LOCAL CHEF." The menu will include Pulled Pork, Chicken & Bratwurst Sandwiches on Buns, Sides of Cole Slaw, Baked Beans & Seasonal Vegetables, and Lemonade & Tea. There also will be presentations of the annual Southern Division awards and of course a speech or two, including remarks by the President of the ENTIRE TCA.

And that's not ALL! In addition, we have produced special, Southern Division 50th Anniversary Travel Mugs which will be available to members. As shown in the photo this very practical and attractive, limited-edition souvenir item has the 50th Anniversary Southern Division Logo on it. A mug will be given out FREE to every, current, TCA Southern Division Member who purchases a ticket and attends the Party on November 5th. The free mug only will be available at this Party. Supply is limited and only one (1) free mug per member will be available. Don't miss the opportunity to receive this special, free gift while celebrating our Golden Anniversary at the Party.



Be sure to pre-register for this party using the form which is an **insert** to this newsletter. **Also, to avoid any disappointments, Bruce respectfully advises that due to insurance regulations he will have to decline rides on his railroad to attendees who are not physically able to safely climb into and out of and sit inside the passenger cars.**

We will conclude the Anniversary year with additional surprises at the Jacksonville Meet on November 19th. So stay tuned to the Newsletter and Website for more details.

Your 50th Anniversary Committee: Bill Trappen, Richard Tashjian & Mike Mills

SOUTHERN DIVISION SOUVENIR TRAIN HISTORY - Part 7

by
Bill Trappen

This is the seventh and final article in a series discussing the history of the Southern Division Souvenir train. This article will discuss the SD Souvenir Trains produced in the 1990's, including the 30th anniversary car along with photos and to complete the series, a group photo of the entire SD Souvenir train.

The last car discussed in part 6 of this article came out in 1988 and as mentioned members were allowed to purchase just one car because only a limited number of cars were available for the Division to purchase and redecorate. From the start of the program in 1975 through 1988, a Southern Division Souvenir train item was produced every year with the exception of only two years, 1982 and 1987. So there was never more than a one-year gap. But as we ended the 1980's decade the SD Souvenir Program went on a hiatus as no souvenir car was produced for three consecutive years starting in 1989. The reason for this lapse isn't explained anywhere in the SD newsletters issued during those years. As mentioned very early in this series we had begun the practice of creating SD Souvenir cars by over-stamping a geographically correct regular cataloged Lionel car. Despite Lionel cataloging a very appropriate car in 1989, no 1989 SD Souvenir car was produced. So at least in 1989, we can't blame it on Lionel! Perhaps the lack of any Souvenir cars during those years was out of the concern that the Division was still too small to justify offering a car in unlimited quantities due to the 1987 spinoff of SD members in the Florida Panhandle and the states of Alabama, Georgia, Mississippi and Tennessee to two new TCA divisions which reduced the SD membership by a significant number of members.

Great news for members came at the Orlando Meet in November 1991 when it was announced that the Souvenir car program was returning as there would be a 1992 SD Souvenir Car. And the 1992 souvenir car was more than just a car plus its custom graphics were very significant to the history of the Division! More on the graphics later.

As shown in the attached photos the 1992 Souvenir "car" was our first Souvenir car made by K-Line, and it was a 2-piece unit consisting of a flat car and a piggy-back trailer load for the car. As it turns out K-Line saved the day for us as a last-minute substitute for the initially-chosen supplier who did not follow through on the agreement.



The car is painted Southern Railway green and as shown in the photo appears that it could have been a regular K-Line cataloged flat car for the Southern Railway. But I could not find it listed under "SOUTHERN" in my copy of the K-Line Collector's Guide, Pocket Edition, 1985-2000. But it was listed under "TRAIN COLLECTORS ASSOCIATION" although the guide book incorrectly lists the year as "94". So this car was specially made for the TCA Southern Division. The car has a black plastic stand to hold the trailer's kingpin and a wheel "chock" to hold the wheels of the trailer in place. The car has plastic Symington-Wayne trucks with operating knuckle couplers like Lionel used which are on all of the earlier SD Souvenir cars. With plastic trucks the relatively heavy trailer load would make this car top-heavy so K-Line added a weight under the car to provide stability.

The trailer is white, die-cast, is as long as the flat car, has two axles with four wheels each, a kingpin and a plastic tilting landing gear for when the trailer is detached from the tractor. The two back doors open and it has four simulated tail lights plus simulated running lights on its roof, one on each corner.

Now regarding those unique graphics, according to the introductory article in the Spring 1992 issue of The Layout, the graphics tell the story of how the Division had grown, became smaller due to the previously mentioned spinoff and then regrew. Centered on the side of the body is the logo of the Southern Division in yellow with green lettering reminiscent of the sunshine and abundance of green in the Florida landscape. The two diagonal green bands each represent a different period of growth of the Division. The band on the left starts at the bottom of the body and rises to a point below the top of the logo showing how the Division had grown since its inception in 1966 to the spinoff in 1987. The band on the right starts at a point below the band on the left but above the bottom of the logo, representing the loss of members to the new divisions, and then rises to the top of the body of the trailer signifying how the Division had regrown from 1987 to 1992. In just a few short years the Division had grown so much that the then total SD membership had become larger than what it had been before the spinoff and loss of many members. As an example, 25 new members were introduced at the business meeting at the fourth quarter 1991 meet in Orlando.

The trailer also has a black TCA logo on the front of the trailer which came as a peel-off decal to be added by the owner. There is nothing on the trailer indicating who made it as the only other text on the trailer is "K-LINE ®" molded into the bottom of the trailer near the front. Also each of the eight tires has "K-LINE ®" molded on the sidewall in two places. And the original K-Line "Heavy Hauler" box pictured does not have any markings on it identifying the contents.

(cont'd. on next page)

SOUTHERN DIVISION SOUVENIR TRAIN HISTORY - Part 7 (cont'd. from previous page)

The cars were priced at \$28.00 for pick up at a Meet and \$32.00 if mailed. Now an 18-wheel rig would not be complete without a tractor so for an additional \$5.00 K-Line also offered a separate sale tractor to pull the trailer to its final destination along the model highways of our layouts. The tractor is also pictured in one of the photos.

Whereas the flat car and the trailer were definitely custom made by K-Line for the Southern Division, the tractor cab is completely void of any graphics. It's all white and is a model of a tractor with a sleeper cab designed for long-distance hauling. I'm not sure what brand of truck it is a model of, if any. It has the usual 2-wheel front axle plus two rear axles with four wheels each which makes the tractor/trailer combination a complete 18-wheeler. And like the trailer, each of the tires has "K-LINE®" in two places. The front license plate has the number "2001" which has nothing to do with the year 2001 but is explained by the last line in the following stamping spread over 3 lines on the underside of the tractor: "TRAILER TRUCK", "SCALE: 1/49" and "ITEM NO. 2001". Stamped on the underframe of the rear axle assembly is the name "SZETOY", an Asian-based toy maker, along with its fancy-shaped "S" logo. Near the center of the underframe is an oval-shaped gold sticker with the words "Made in China". So the tractor was made by SZETOY and perhaps they made the trailer also.

I don't have the details on how many separate sale tractors were sold but a total of 203 flat cars with trailers were ordered and sold. That's quite an impressive sales volume especially for a non-Lionel souvenir car. Despite their late start K-Line came through for us by delivering the cars the day BEFORE they were to be distributed at the November 1992 Meet in Orlando! Needless to say the chairman of the 1992 Souvenir Car Committee was very relieved to see the UPS truck show up at his doorstep that day before the Meet. The chairman was the late and beloved Scotty Askenas who many members will remember as the long-time former editor of this Newsletter.

On to 1993 and the initial plan was to use a single-dome tank car as the 1993 SD souvenir car, which would have been the first tank car in the SD train. However, those plans were changed and a gondola car was produced instead, which was the first gondola in the SD train.

Because of our success with K-Line in 1992 (not to mention their lower prices and minimum order quantities compared to Lionel), K-Line was chosen to provide the 1993 SD Souvenir car; and, like the 1992 car, it carried a special load very representative of the Southern Division. As shown in the attached photos, once again the car is in Southern Railway green like the 1992 flat car but this time the lettering says "SOUTHERN DIVISION" with the two words cleverly spread across the four centermost vertical panels with two letters of each word in each panel.



The lettering is a bright yellow which looks great with the green car color. Instead of plastic trucks like all previous SD souvenir cars, this car has fully sprung die-cast metal trucks and die-cast couplers so this car is no light weight! The car also has the SD and TCA logos on the sides as well as the year "1993". The load, or shall I say loads, is a set of four white shipping crates specially made for us. Each crate is 1 7/8" high by 1 7/8" wide and has a depth of 1 1/4". The top is removable and has a simulated hatch as shown in the close-up photo. Each crate has two green oval decals on it and what is printed on those decals is what makes them special and very symbolic of our Division. The four crates are each imprinted in white lettering with a different one of four of the many benefits of being a Southern Division member which are as follows: "Display", "Fellowship", "Open House" & "Trading". There are two of the same stickers on each crate, one on the front and one on the back. The car's original box is pictured which has a label on one end flap identifying the car as "K-652302 TCA SOUTHERN Gondola 1993" (they forgot to add the word "DIVISION"). There is no label on the other end of the box.

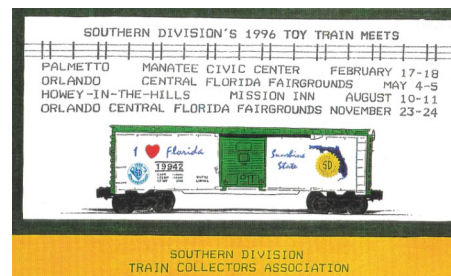
The cars were offered to members for \$28 plus \$5 for shipping. Members could order as many cars as they wanted. Production and sales data for the 1992 car were not printed in any of the newsletters from that period of time. Despite their handsome looks and unique loads it is obvious that these cars were not as well received as the 1992 car because the Division continued to offer them for sale even as late as the second quarterly newsletter of 1994. I also remember the Division offering them as door prizes to lucky attendees at meets for quite some time. The fact that we had excess 1993 cars is probably why there was not a 1994 car or a 1995 car and led to the decision to issue a Souvenir car only in each significant Division Anniversary Year.

Speaking of significant anniversaries, in 1996 the Southern Division celebrated the 30th anniversary of its founding. And Lionel could not have done us a bigger favor when their "1995 Stocking Stuffer/1996 Spring Release" catalog showed item #6-19942, a very attractive "I Love Florida" O gauge 9700-series box car! What an appropriate car to which we could add our 30th Anniversary graphics, especially since our division boundaries were now completely within the state of Florida. In addition to the car with special SD 30th Anniversary Graphics we also produced a set of 2 special SD billboard signs. Every member who ordered the car also received the billboard signs inserted into the original box with the car. With some trimming the signs are designed to fit into Lionel's #310 style billboard frame or its modern-era descendants, which the member had to supply.

(cont'd. on next page)

SOUTHERN DIVISION SOUVENIR TRAIN HISTORY - Part 7 (cont'd. from previous page)

The Lionel “factory” version of the car was already very nicely decorated for Florida so we didn’t have to add very much. Dennis Gergel, Jr., son of former member Denny Gergel and a free-lance artist, designed the artwork for the labels to be attached to the car and also the billboard signs. As you can see from the photo the car has two different SD labels on each side. The label on the lower left is a unique 30th SD Anniversary label in blue with a white background. The other label is the circular SD logo in orange with black text which was placed over the existing circular orange sunburst on the right side of the factory car. These labels are adhesive stickers.



Scans of the billboard signs are also shown in the attached photos. The first sign is Denny, Jr.’s rendering of some of the original graphics from the car including the “I Love Florida” slogan plus the orange SD logo. The second sign shows a photo of our car with the schedule of 1996 SD Train Meets above it. The billboard signs also have appropriate wording for the 30th Anniversary in the lower border.

Denny contacted Lionel dealers to purchase cars and he and Denny, Jr. bought and printed the labels and inserted them on the cars prior to delivering to the SD. As can be seen in the photo the box end flap also has a custom-printed label. Not shown is the other end of the box which has the original Lionel factory label.

The cars with the 2 billboards were priced at \$35 for delivery at a meet plus \$5 for shipping if the member wanted them shipped to his home. Members were allowed to order two cars. Despite a very attractive and appropriate Lionel car for this occasion, the response was disappointing as only 105 cars and billboard sets were ordered by members.

The 40th Anniversary SD souvenir cars were already discussed in part 1 of this series. Because the 50th anniversary souvenir car will be a trolley which is a stand-alone, or run-alone, car and not part of a freight train, the SD Souvenir train has been completed. Therefore, we are now ready for a “family portrait” of all of the cars. In this case the family photo will be missing one car, the 40th Anniversary Standard Gauge car produced in 2006, which I don’t have as only 4 were produced. There is a photo of that car in Part 1 of this series. But even getting all fifteen of the O gauge cars and the 3-unit FEC cabs into one photo proved to be difficult because the train is over 17 feet long! As you can see in the final photo I had to clear off a wide area on the bottom four shelves in my train room and arrange the souvenir cars in rows on those four shelves. The 1976 engine is first on the top shelf followed by the 1975 box car. Then on the second shelf starting at the RIGHT is the 1978 box car followed from right to left by the next four cars in chronological order: 1979, 1980, 1981 & 1983. Then on the third shelf starting on the LEFT are the 1984, 1985, 1986, 1988 and 1992 cars. On the last shelf, starting from the RIGHT are the 1993, 1996 and 2006 cars with the 1977 caboose marking the end of the train. Plus, the 1996 billboard signs are shown at each end of the last shelf installed in Lionel post-war #310 frames.



That’s the end of this series of articles. I hope you enjoyed them.

In fiscal year 2014-2015, the Southern Division recruited 20 new members. In fiscal year 2015-2016, the Southern Division recruited 32 new members, an increase of 60% in new member sign ups over the previous year!



Train Collectors Association™

A 501(c)(3) Corporation

May 25, 2016

Southern Division of TCA
Bradley Woodward
5712 Tangelo Drive
Fort Pierce, FL 34982-7532

Dear Brad:

As a motion of the Strategic Planning Committee at the Board of Directors meeting in 2015 the following motion was passed.

Motion: As part of the Strategic Plan 2015, I move that a Division Recruiting program be established. Each Division that recruits 10% more new members this year than last year will be sent a Convention car to be raffled. Motion passed.

The Southern Division of TCA met this challenge.

In fiscal year 2014-2015 the Southern Division had 20 new members.

In fiscal year 2015-2016 the Southern Division had 32 new members.

This is a 12% increase.

I have enclosed a convention car for you to raffle at one of your events.

Regards,

Tammy S. Hersh
Tammy S. Hersh
Office Manager

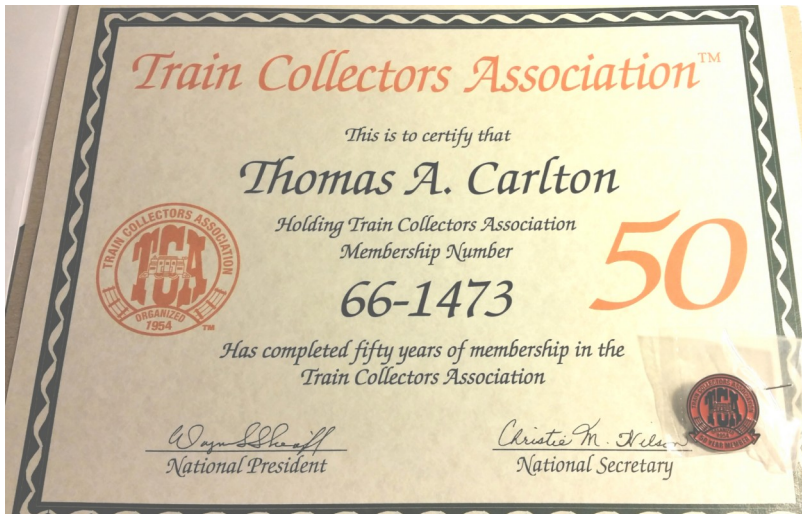
Cc: Wayne Sheriff

P.O. Box 248, Strasburg, PA 17579-0248 • (717) 687-8623 • Fax (717) 687-0742
www.traincollectors.org • email: tca-office@traincollectors.org



Thomas Carlton, SD Member, Recognized for 50 Years in TCA!

Congratulations to **Thomas Carlton**, a current SD Member, who recently received a certificate and pin.



Peter Campisi's Amazed and Grateful RR

In the last issue of *The Layout* we asked for photos of members' layouts. Peter Campisi sent us the following: "I have been working on the A&GRR for about 10 years. I'm guessing it's 75% done. The layout is 21' long, 8' wide on the left side and 15' wide on the right (with the mountain backdrop). There's an open space in the middle of the layout and I have to duck under to get to the transformers and control panel. There are "repurposed" and repainted Plasticville houses as well as a number of other structures."



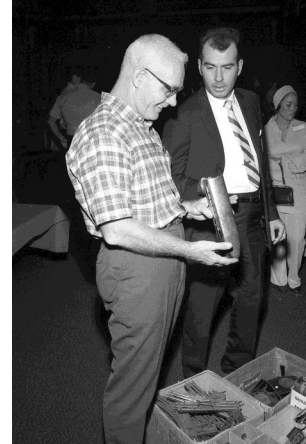
PHOTOS

All were submitted by August Staebler (SD photographer in the division's early years).

Titusville Meet, January 11, 1970



Foreground (L-R): first man unidentified, Tom Carlton, Doc Binneveld, Dr. Bartlett



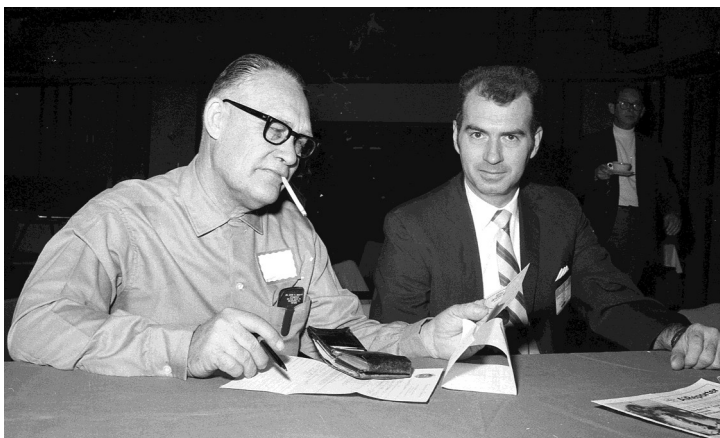
**Left: Al Bailey
others unidentified**



Lee Stuhl (kneeling)



**Doc Binneveld
in center; others
unidentified**



Left: John Cressman; others unidentified



(L-R) Lee Stuhl, Dr. Bartlett, Fred Clark

MORE PHOTOS

All were submitted by August Staebler.

Leesburg Meet, November 7, 1971



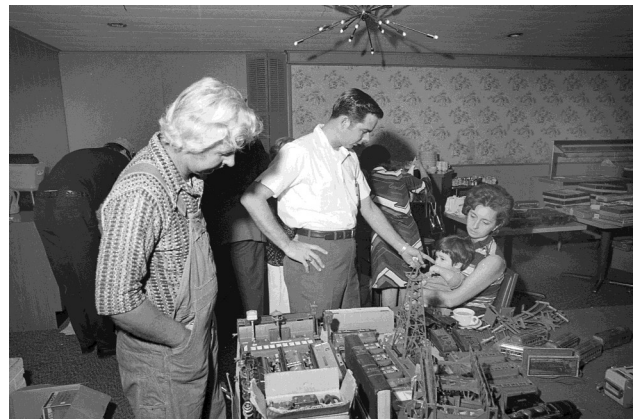
**Foreground (L-R): Chester Holley and Lee Stuhl
Background: Bud Albers smoking a cigar**



**Brad Woodward reaching for a train, Ernie
Howering to his right (other gentleman unidentified)**



Earl Mueller and Don Guckian



**Name unknown of man in foreground,
in back is Ken Valdespino with his wife and child.**



**Fisheye shot showing small room we had for this
meet with trains even being displayed on the floor!**

THE TRAVELING OF TOY TRAINS TOOLING AND DIES

by

Brad Woodward

There were more than three toy train makers In the 1950s. Does the following . . .bring back memories to you? Let's take a look at how the Tooling and Dies continue from the past into the future.

AMT (Auburn, Indiana-based American Model Toys) found weaknesses in Lionel's product line, and they survived by producing models that filled those weaknesses. They were content to be an aftermarket producer, and they sold their items to Lionel's customers. A set of aluminum passenger cars was designed by Tool and Die Maker, and those cars could negotiate Lionel track. The next year Lionel started making aluminum passenger cars. AMT then produced a model of a diesel locomotive that went with the aluminum passengers cars. In 1954, Kusan, a plastics and toy company based in Nashville, Tennessee, bought AMT. Kusan used AMT tooling, plus new designs of their own, to produce train sets. These sets had atomic and military themes.

Many special-order models and sets were made by Kusan. A few, such as The "Gravy Train" Dog Food set, were produced by the thousands, but some were one of a kind. Three, O gauge passenger sets for the B&O Railroad were among limited run orders. There was one each for the UP and ACL Railroads. Kusan made a special, promotional freight set for the Bexel Company. This was Set #KF-1015 which came with a specially logoed #2716 'Bexel Special' Alco, boxcar, tank car, #5066 gondola, caboose, 16 pieces of curved two-rail track and a DC power pack. In 1961, due to a declining market, Kusan ceased production.

Andy Kriswalus from New York state was a hobbyist who purchased Kusan's Tooling and Dies. He formed Kris Model Trains or KMT. KMT only produced rolling stock. Williams Electric Trains bought KMT's Tooling and Dies in 1990 as KMT dissolved. A Maryland toy maker, Williams Electric Trains, had begun reproducing Lionel's pre-war tinplate trains in the 1960s. Williams decided to make O gauge trains.

Jerry Williams founded Williams Trains 1971 and made reproductions of vintage trains using the tooling and dies he had acquired from Lionel Standard gauge trains. Mike Wolf purchased the tinplate tooling from Williams Trains, but Williams concentrated its efforts on 1950s-style trains.

K-Line, a North Carolina toy maker, purchased much of Marx's Tooling and Dies when MARX closed in 1978. They used it to make inexpensive trains. K-Line also bought the rest of the AMT/Kusan/KMT Tooling and Dies. Maury D. Klein founded MDK in 1975 and first used the K-Line name to produce O-027 track. In 1978 K-Line started using old Marx Tooling and Dies to make K-line trains.

During the Kusan era, a small switcher ended up at Williams. It was nicknamed the "BEEP" (for Baby GEEP). Williams briefly produced it, but the tooling was resold to RMT (Ready Made Trains). RMT subcontracted for TMT (Taylor Made Trucks). TMT got a license to put the Lionel logo on die-cast vehicles. Along came 2001, and RMT used the BEEP Tooling and Dies to make a Lionel logo mini-GP diesel. RMT produced the BEEP with power, priced at \$49.95, in different railroads in 2003.

RMT was name stamped into each chassis metal plate. Here is an interesting footnote...custom runs of the BEEP diesel locomotive for dealers, train clubs or groups were available.

RMT owner Walter Matuch retired this past February . . .so where will the Tooling and Dies go next?

(information compiled from several research articles)

Melody Rogers (Museum Assistant), Tim Stier (Publications Editor) and Wayne Sheriff (TCA President) raising a new flag at the TCA Museum.



Charlie Anyan - you must go through this



to get to THIS!



SWITCH LIST



Paul Dean (352-223-4510) Sell: RCS Controllers (need rewiring); #97 Controller (needs rewiring), Gargraves 2-rail track, #120 Crossover, #36, #37, #48, #32-20, KW, SW, LW Transformers; #19 bulbs, #167 Whistle Controllers, 1866, 1876, 1875W cars; 2623 passenger cars, Bicentennial special set, 12948 Bascule Bridge, 3356 horse car w/corral, 6257, 6357, 2411, 2454, 2452X, 6012 cars, 2530, 2531, 2532, 2533, 2534, 2422, 2423, 2429, 2435, Passenger cars, 214 bridge boxed, NYC bridge, AF bridge, 3462 milk platform, #456 coal ramp w/coal car, new Lionel watch, 28051, 29010 locomotives – all reasonably priced.
Wanted: 2460 cab, 6460 trucks, 2460 frame, 6460 cab.

Dennis Puskaric: Sell: large layout, overall dimensions 22' x 9'3". All track and switches are included. Most of the layout uses Gargraves track. The layout can be broken down into 6 sections and the legs can easily be removed. Engines and rolling stock are not included.

Contact Dennis Puskaric, Hobe Sound, FL TCA # 76-9668, LCCA # RM 5299, SD-TCA # 2440, Cell: 561. 573. 4742, Land Line: 772.545.3600, Email: dmpcar@bellsouth.net requesting pictures and video.

The **Switch List** is a free service to Southern Division Members. Send your ads (space permitting) for trains for sale/wanted/trade to Mary Anyan. Ads must be renewed prior to each issue of *The Layout*. You may renew your ad for **one** issue at a time by contacting Mary via email, mial@tampabay.rr.com, or snail mail, 1800 Follow-Thru Rd. N., St. Petersburg, FL 33710-3724.

Upcoming 2016 Florida Meets/Train Shows

July 9: 56th Florida Rail Fair, Volusia County Fairgrounds, 3150 East New York Ave., **Deland** 32724 (**Golden Spike**, Charles Miller, 703-536-2954 or 386-736-8185, e-mail rrshows@aol.com; website www.qserr.com)

August 20-21, (Saturday-Sunday): Savannah Regional Recreations Center, 1545 Buena Vista Boulevard, **The Villages** 32162 Saturday 9A-4P, Sunday, 10A-3P, (**The Villages Model Railroad Club Model Train & Railroad Show and Sale:** phone 352-205-4322 or 352-751-3034, e-mail amgoldho@reagan.com)

August 27: Lopez Hall, 7177 58th St. N., **Pinellas Park** 33781, 9A-2P (**Regal Railways:** Joe, 727-244-1341, all shows 9A-2P, www.regalrailways.com)

September 3: Azan Shrine Temple, 1591 W. Eau Gallie Blvd., **Melbourne** 32935. (**Schultz Space Coast Trains**, Schultzspacecoasttrains.com, 321-805-1963)

September 10: 10A-3P, Venice Community Center, 326 South Nokomis Ave., **Venice** 34285 (**TCA Southern Division**)

October 1: 57th Florida Rail Fair, Volusia County Fairgrounds, 3150 East New York Ave., **Deland** 32724 (**Golden Spike**, above)

October 8: Columbia Club of Osceola, 2000 Neptune Rd., **Kissimmee** 34744 (**Regal Railways**, above)

October 15: Elks Lodge, 401 Indiana Ave., **Englewood** 34223 (**Regal Railways**, above)

October 29: Citrus County Auditorium, 3610 S. Florida Ave., **Inverness** 34450 (**Regal Railways**, above)

November 19: Morocco Shrine Auditorium, 3800 St. Johns Bluff Rd., **Jacksonville** 32224, 10A-3P (**TCA Southern Division**)

December 3: Azan Shrine Temple, 1591 W. Eau Gallie Blvd., **Melbourne** 32935 (**Schultz Space Coast Trains**, above)

December 3: Lopez Hall, 7177 58th St. N., **Pinellas Park** 33781 (**Regal Railways**, above)

December 10-11: St. Mark's School Gymnasium, 3395 Burns Rd., **Palm Beach Gardens** 33410, (**Derrick Dean Wagner Memorial Scholarship Foundation**, contact Will Wagner, 561-373-9603, email Derrickwagnerfoundation@gmail.com or wwainc@comcast.net)

December 17-18: 6th Tampa Model Show, Florida State Fairgrounds, 4800 US Hwy. 301 North, **Tampa** 33610 (**Golden Spike**, above)

Please send notices of upcoming Florida train shows to Jeff Mayer, jcjmayer@gmail.com or call 321-297-0501.

Promotion and Attendance at Train Meets

In order to promote awareness and thus attendance, we will print a schedule of upcoming shows in each quarter's Layout and on our Southern Division website (www.tcasoutherndivision.org). Another way these meets are promoted is by having flyers about upcoming shows available at each show, thus marketing to folks who have already evidenced an interest in trains by attending the show. We are looking for TCA-SD members to assist in that distribution. If you plan to attend any train-related meets, shows or other events, please contact TCA SD Vice President Steve Johnson (email: sjohnson@fljdcpa.com or call: 305-335-1752) and let him know. Steve will get flyers to you to take to the meet and leave out for others. If possible, please give Steve at least a week or more notice to ensure he has time to get the appropriate flyers to you. Thanks for your help.

**The deadline for articles/photos, etc. for
the next issue of *The Layout* is
September 1, 2016. Thank you!**